

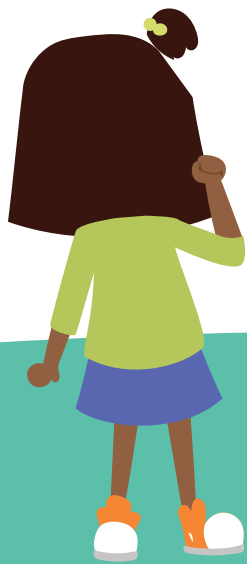
S a

H

h

S

f u v



Pink-eye / Conjunctivitis

Children with pinkeye do not have to stay home unless there is a recommendation from the health department or the child's healthcare provider. A child with pinkeye should see a healthcare provider if he or she has fever or severe eye pain. Antibiotics are not required for return.

Rash with fever, behavioral changes or other symptoms

Children who have a quickly spreading rash or a rash with fever or behavior change are to be removed from school or childcare immediately. A **medical note** is required to return.

Ringworm

Children with **ringworm of the scalp** must remain out of school or childcare from the end of the day until they have begun treatment with a prescription oral antifungal medication. Your child may return with a medical note.

Children with **ringworm of the body** must remain out of school or childcare from the end of the day until they have begun treatment with a topical antifungal medication. Your child may return with a **parent note**.

Rubella / German Measles

Keep your child home until 7 days after rash starts. The child may return with a